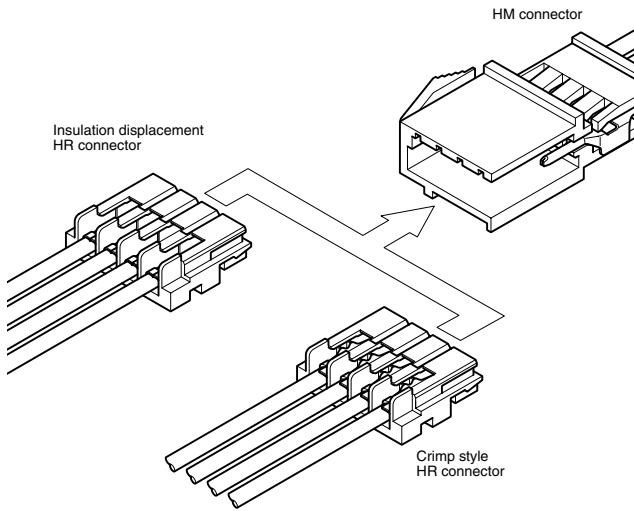


# HM CONNECTOR

**2.5mm pitch/Wire-to-wire connectors - Matable with HR receptacles**



- Both crimp style and insulation displacement receptacles can be used
- Housing-to-terminal locks
- Mountable on a variety of panels
- Highly reliable housing construction

## Specifications

- Current rating: Crimp style HR connectors type  
3A AC, DC max.  
Insulation displacement HR connectors type  
2A AC, DC max.
- Voltage rating: 250V AC, DC max. (See Note below.)
- Temperature range: -25°C to +85°C  
(including temperature rise in applying electrical current)
- Contact resistance: Initial value/10m Ω max.  
After environmental testing/20m Ω max.
- Insulation resistance: 500M Ω min.
- Withstanding voltage: 1,000V AC/minute
- Applicable wire: AWG #26 to #22  
0.13 to 0.33mm<sup>2</sup>
- Applicable panel thickness: 0.8 to 1.6mm

*Note: Contacts are exposed at the housing lances.*

*Care should be taken so that these parts do not touch the metal section of the chassis.*

\* In using the products, refer to "Handling Precaution for Terminal and Connector" described on our website (Technical documents of Product information page).

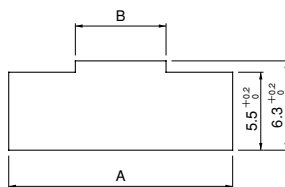
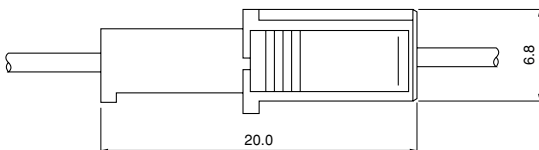
\* Contact JST for details.

\* Compliant with RoHS2.

## Standards

Recognized E60389

## Panel layout and Assembly layout



Circuits	Housing	Panel hole dimensions (mm) General tolerance		Applicable panel thickness (mm)
		A $\begin{smallmatrix} +0.2 \\ 0 \end{smallmatrix}$	B $\begin{smallmatrix} +0.2 \\ 0 \end{smallmatrix}$	
2	HMR-02V	13.3	3.9	0.8~1.6
3	HMR-03V	15.8	6.4	
4	HMR-04V	18.3	8.9	
8	HMR-08V	28.3	18.9	
12	HMR-12V	38.3	28.9	

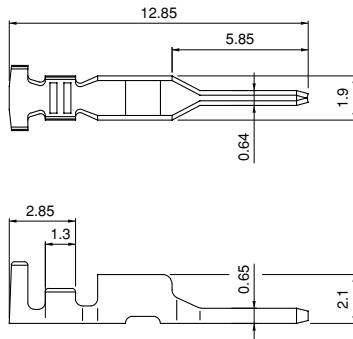
*Note: 1. Punch holes in the panel according to the sketch and table shown above. Burrs must be removed.*

*2. The strength of the panel must be considered when punching two or more holes.*

*3. The connector must be inserted from the same side as the hole is punched.*

## Plug / HM connector

### Contact



Model No.	Applicable wire		Insulation O.D. (mm)	Q'ty / reel
	mm <sup>2</sup>	AWG #		
<b>SMR-001T-0.6</b>	0.13~0.33	26~22	1.3~1.7	9,000

#### Material and Finish

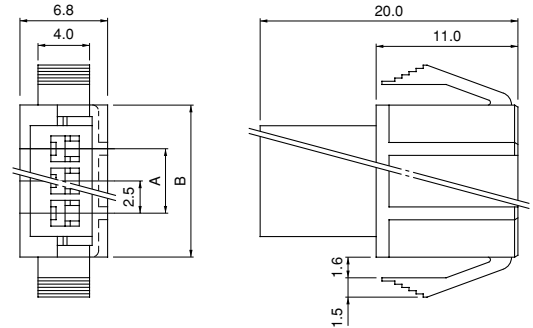
Brass, tin-plated (reflow treatment)

#### RoHS2 compliance

Contact	Crimping machine	Applicator		
		Crimp applicator	Dies	Crimp applicator with dies
<b>SMR-001T-0.6</b>	AP-K2N	MKS-L	MK/SHR/MR-001-06	APLMK SHR/MR001-06
		*MKS-SC	SC/SHR/MR-001-06	APLSC SHR/MR001-06

Note: \*Strip-crimp applicator

### Housing



Circuits	Model No.	Dimensions (mm)		Q'ty / bag
		A	B	
2	<b>HMR-02V</b>	2.5	9.3	1,000
3	<b>HMR-03V</b>	5.0	11.8	500
4	<b>HMR-04V</b>	7.5	14.3	500
8	<b>HMR-08V</b>	17.5	24.3	500
12	<b>HMR-12V</b>	27.5	34.3	500

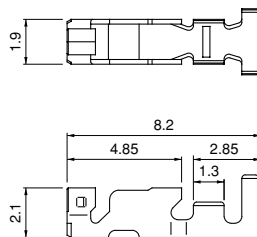
#### Material

PA 66, UL94V-0

#### RoHS2 compliance

## Receptacle / Crimp style HR connector

### Contact



Model No.	Applicable wire		Insulation O.D. (mm)	Q'ty / reel
	mm <sup>2</sup>	AWG #		
<b>SHR-001T-P0.6</b>	0.13~0.33	26~22	1.3~1.7	9,000

#### Material and Finish

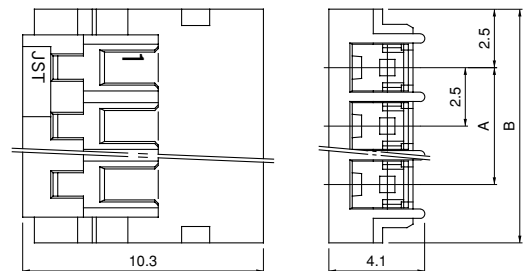
Phosphor bronze, tin-plated (reflow treatment)

#### RoHS2 compliance

Contact	Crimping machine	Applicator		
		Crimp applicator	Dies	Crimp applicator with dies
<b>SHR-001T-P0.6</b>	AP-K2N	MKS-L	MK/SHR/MR-001-06	APLMK SHR/MR001-06
		*MKS-SC	SC/SHR/MR-001-06	APLSC SHR/MR001-06

Note: \*Strip-crimp applicator

### Housing



Circuits	Model No.	Dimensions (mm)		Q'ty / bag
		A	B	
2	<b>HRP-02-S</b>	2.5	7.5	2,000
3	<b>HRP-03-S</b>	5.0	10.0	2,000
4	<b>HRP-04-S</b>	7.5	12.5	1,000
8	<b>HRP-08-S</b>	17.5	22.5	500
12	<b>HRP-12-S</b>	27.5	32.5	500

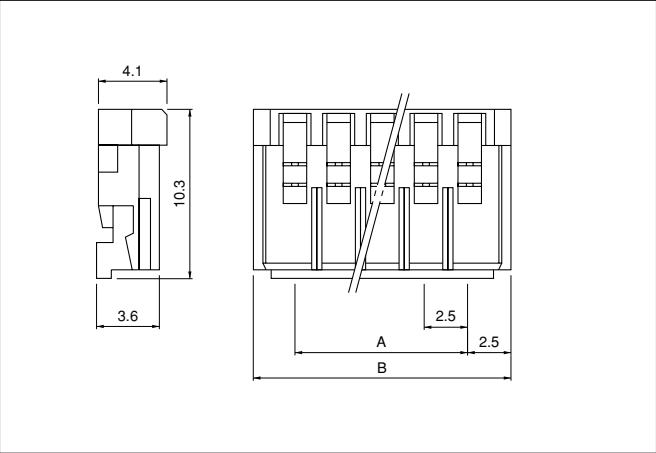
#### Material

PA 66, UL94V-0

#### RoHS2 compliance

# HM CONNECTOR

## Receptacle/Insulation displacement HR connector



Circuits	Model No.			Dimensions (mm)		Q'ty / bag
	# 28	# 26	# 24	A	B	
2	02HR-8M-P-N	02HR-6S-P-N	02HR-4K-P-N	2.5	7.5	1,000
3	03HR-8M-P-N	03HR-6S-P-N	03HR-4K-P-N	5.0	10.0	1,000
4	04HR-8M-P-N	04HR-6S-P-N	04HR-4K-P-N	7.5	12.5	1,000
8	08HR-8M-P-N	08HR-6S-P-N	08HR-4K-P-N	17.5	22.5	500
12	12HR-8M-P-N	12HR-6S-P-N	12HR-4K-P-N	27.5	32.5	500

Material and Finish						
Contact: Phosphor bronze, tin-plated (reflow treatment)						
Housing: PA 66, UL94V-0						

RoHS2 compliance