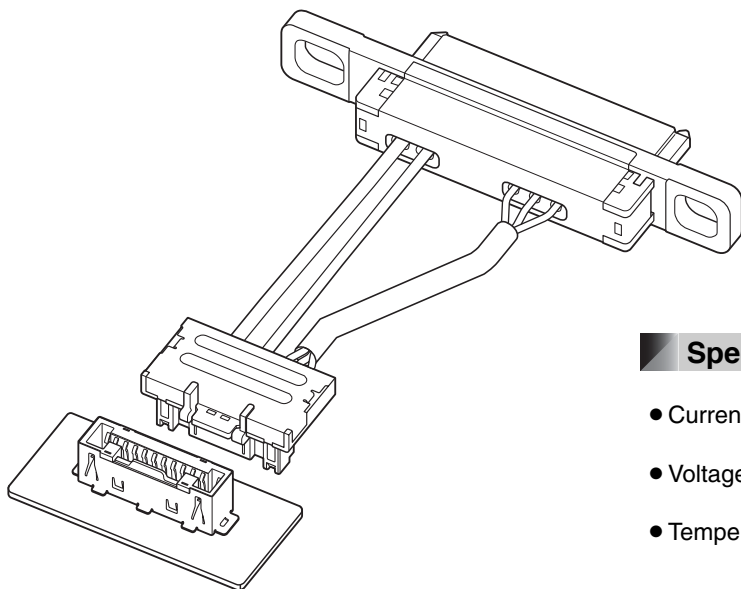




This AS connector consists of the female connector on PCB side and the high-speed differential transmission harness used for internal connection between the PCB and the HDD corresponding to SATA standard for automobile equipment such as HDD navigation system.



Features

HDD mating side connector: 1.27mm pitch

PC board side female connector: 1.5mm pitch

●High reliability

Contact reliability and toughness corresponding for automobile equipment are realized.

●High-speed transmission

Transmission characteristic conforms to Serial ATA HDD (Rev 2.6).

●Floating mechanism

HDD mating side connector has floating mechanism to absorb misalignment and to prevent from crashing each other when mating HDD.

●Noise suppression

In order to improve the noise immunity, PCB side connector has a multiple connecting structure for connecting between the shells of male side and female side when mating the connector, and for connecting between the shell of female side and GND of PCB.

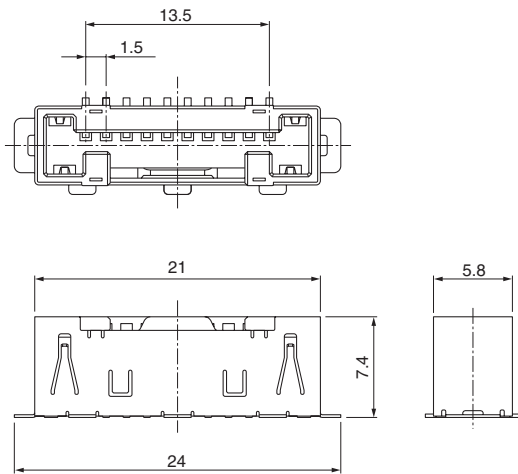
●Clear engagement click sounds

PC board side connector has adopted locking mechanism with good click feeling in order to mate completely.

Specifications

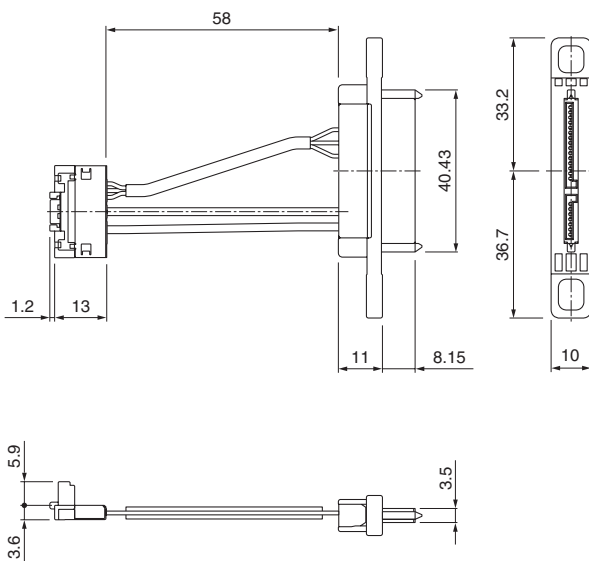
- Current rating: Power/ 1.5A AC, DC
Signal/ 0.3A AC, DC
 - Voltage rating: Power/ 10V AC, DC
Signal/ 5V AC, DC
 - Temperature range: -40°C to +95°C
(including temperature rise in applying electrical current)
 - Contact resistance:
 - Power; Initial value/ 50mΩ max.
After environmental testing/ 70mΩ max.
 - Signal; Initial value/ 90mΩ max.
After environmental testing/ 110mΩ max.
(Including 60mm of cable part)
 - Differential: 100Ω±10%
Impedance (Transmission characteristic conforms to Serial ATA Rev 2.6.)
 - Circuits: PC board side/ 10 circuits
HDD side/ 22 circuits (Power supply circuit corresponds to 5V.)
 - PC board mounting direction: Top entry
- * Compliant with ELV/RoHS.
* Contact JST for details.

Female connector



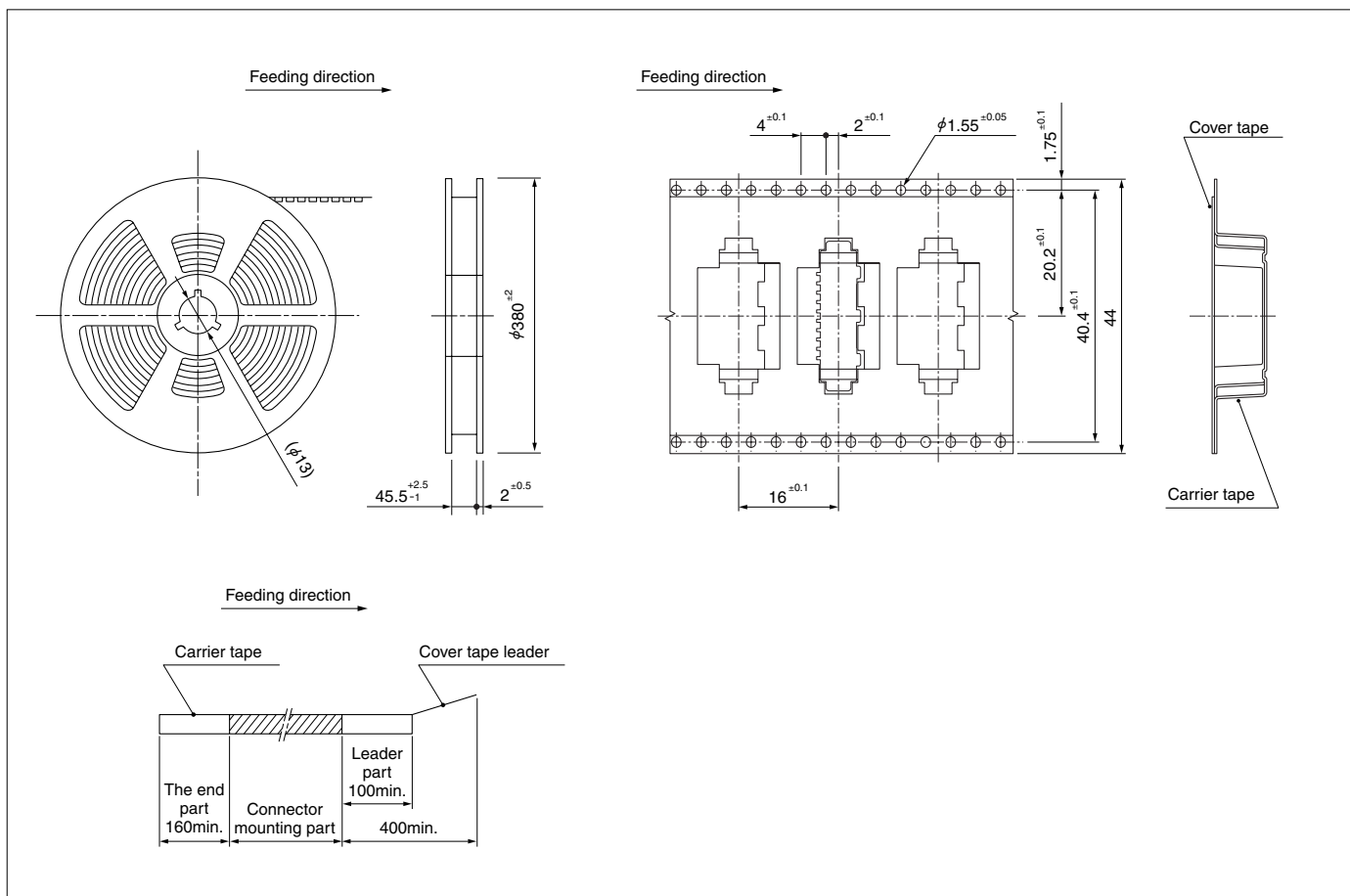
Type	Model No.	Q'ty/reel
PC board side	BM10B-AS1RGK12-TB	650
Material and Finish		
Contact: Copper alloy, nickel-undercoated, Contact area; gold-plated Solder tail; tin-plated		
Housing: Heat resisting resin, black		
Shell: Copper alloy, tin-plated		

Harness

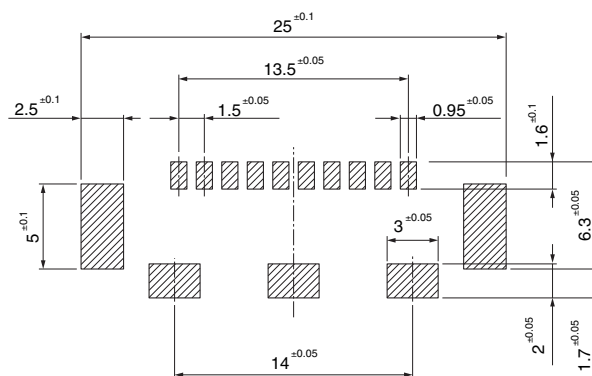


Type	Model No.	Q'ty/box
Harness	AS1P-H1R-A1-058	320
Material and Finish		
SATA side connector Power, Signal: Copper alloy, nickel-undercoated, Contact area; gold-plated Solder tail; tin-plated		
Housing: Heat resisting resin, black Holder housing, Cap housing: Thermoplastic resin, black		
AS connector Male Contact: Brass, nickel-undercoated, Contact area; gold-plated, Solder tail; tin-plated		
Housing, Holder housing, Cover housing: Thermoplastic resin, black Male shell, Cover shell: Stainless steel, nickel-undercoated, selective tin-plated		
Caulking material for signal circuit & power supply circuit Copper alloy, tin-plated		

Taping Specifications



PC board layout



Note: 1. Tolerances are non-cumulative: ± 0.05 mm for all centers.
2. The dimensions above should serve as guideline. Contact JST for details.