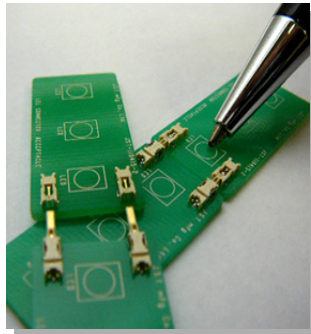


LEL connector

- < Type >
- Absorbing PC board misalignment type, PC board horizontal mounting type
- < Current rating >
- 1.6A
- < Voltage rating >
- 100V

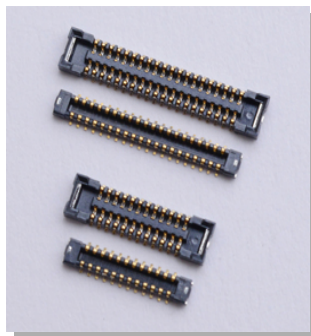


Considering about luminescence property of LED package, this LEL connector is designed as low profile type connector for LED lighting, and achieves the space saving. The horizontal connection between PCBs enables and the mechanism of absorbing the PCB misalignment has been installed considering the parallel use for the connector. Bellows type contact that has a high contact pressure and a high durability performance (receptacle side) and enough mating stroke provides the stable contact performance even if the PCB expands and contracts due to heat.

JAK connector

0.4mm pitch

- < Type >
- With locking device, PC board perpendicular mounting type
- Disconnectable type
- < Current rating >
- 0.3A
- < Voltage rating >
- 30V

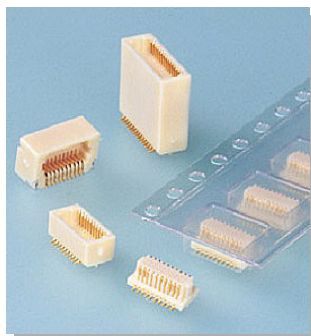


This is space saving type board-to-board connector with 0.4mm pitch, 0.8mm between PC boards and 2.0mm product width.

JMC connector

0.5mm pitch

- < Type >
- Full automatic IDC machine, Compact type, Space saving mountable, PC board parallel or perpendicular mounting type
- < Current rating >
- 0.5A
- < Voltage rating >
- 50V



This JMC connector is 0.5 mm pitch SMT type board-to-board connector which realizes miniaturizing and space saving. Plug connector has the various connection types such as top/side entry types including the stacking height variation and receptacle connector has the fixed/absorption misalignment types.

JKGN connector

0.35mm pitch

- < Type >
- Shrouded header type, PC board parallel mounting type
- Space saving
- < Current rating >
- 0.5A
- < Voltage rating >
- 30V



This connector is 0.35 mm pitch board-to-board (FPC) connection connector with mounting height 1.0 mm, product width 2.88 mm.

JAS connector

0.4mm pitch

- < Type >
- Shrouded header type, PC board parallel mounting type
- < Current rating >
- 0.3A
- < Voltage rating >
- 30V



This connector is 0.4 mm pitch SMT type board-to-board connector with parallel connection.

JMD connector

0.5mm pitch

- < Type >
- Shrouded header type, PC board parallel or perpendicular mounting type
- < Current rating >
- 0.5A
- < Voltage rating >
- 50V

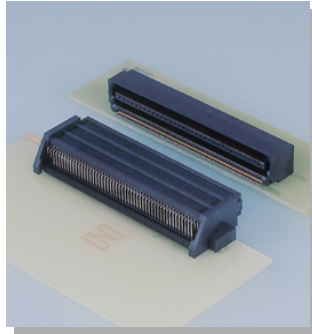


This connector is 0.5mm pitch SMT type board-to-board connector with horizontal and vertical connection.

JU connector

0.6mm pitch

- < Type >
- Shrouded header type, PC board horizontal, parallel or perpendicular mounting type
- < Current rating > 0.5A
- < Voltage rating > 50V



This JU connector is a board-to-board connector which has many circuits such as Maximum 200 circuits.
*Fully shrouded box style design
Its mating portion is designed with a full shrouded box style which prevents the contamination of splashed flux.

JUX connector

0.6mm pitch

- < Type >
- Shrouded header type, Compact type, PC board parallel or perpendicular mounting type
- < Current rating > 0.5A
- < Voltage rating > 50V



This connector is small 0.6 mm pitch dual-row board-to-board connector for high density mounting.

HTB connector

0.635mm pitch

- < Type >
- Absorbing PC board misalignment type, PC board perpendicular mounting type
- Absorbing PC board misalignment type, PC board horizontal mounting type
- < Current rating > 0.5A
- < Voltage rating > 50V



This HTB connector is 0.635mm pitch SMT type board-to-board connector with parallel and perpendicular connection.

RHM connector

1mm pitch

- < Type >
- Shrouded header type, PC board parallel mounting type
- < Current rating > 0.5A
- < Voltage rating > 50V



The plug consists of upper and lower parts in order to save space.
This connector enables also flexible application by using either upper or lower parts individually.

JE connector

1.25mm pitch

- < Type >
- Shrouded header type, PC board perpendicular mounting type
- < Current rating > 1.0A
- < Voltage rating > 50V

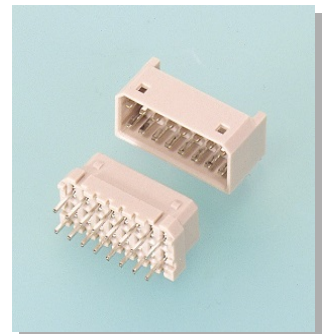


The JE connector is a compact, board-to-board connector only 6.8 mm high and 4.4 mm wide. Its mating part has a 1.25 mm pitch, single row construction. High contact pressure dual beam fork contacts are combined with a housing lock mechanism to ensure a reliable connection.

JED connector

1.25mm pitch

- < Type >
- Shrouded header type, Double-row, PC board parallel or perpendicular mounting type
- < Current rating > 1.0A
- < Voltage rating > 50V

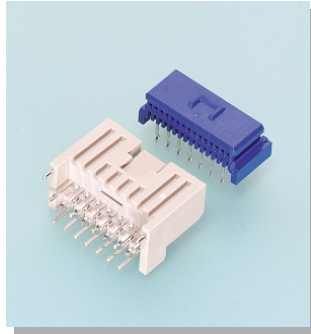


This 1.25 mm pitch dual-in-line, board-to-board connector. Double-sided, high-pressure contacts and a housing locking feature provide reliable connections.

JET connector

1.25mm pitch

- < Type >
- With locking device, PC board perpendicular mounting type, With staggered solder tails
- < Current rating > 1.0A
- < Voltage rating > 50V

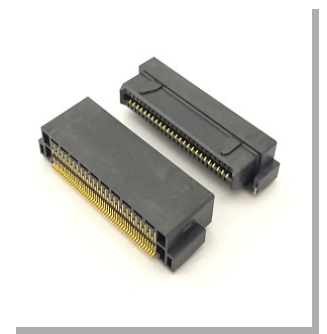


Self-supporting style board to board connectors. Both plugs and receptacles are supplied radial-tape mounted (conforming to JIS C 0805 tape specification), which can be mounted by versatile, radial component pick and place machines. Automatic mounting is possible up to 15 circuits.

JXV connector

1.27mm pitch

- < Type >
- Shrouded header type, PC board horizontal, parallel or perpendicular mounting type
- Rectangular connector, High-density mountable type, SMT type
- < Current rating > 1.0A
- < Voltage rating > 50V



This connector is board-to-board connector that the flat horizontal connection between boards enables in electronic equipment. For SMT type of high-density 1.27mm pitch, the rating current of industry leading 1.0A has been enabled. This connector is firm, good mating feeling and most suitable for connecting function board to the same horizontal direction.

MQ connector

2mm pitch

- < Type >
- Shrouded header type, Compact type, PC board parallel or perpendicular mounting type
- < Current rating > 1.0A
- < Voltage rating > 250V



Measuring 2.0 mm in pitch, 9.2 mm in mounting height and 5.5 mm in thickness, this board-to-board connector makes high-density mounting of components in electronic products possible. It is ideal for small electronic products, such as portable VCAs and video cameras, which require high-density mounting and high reliability.

HVQ connector

2.5mm pitch

- < Type >
- With locking device, PC board horizontal, parallel or perpendicular mounting type
- < Current rating > 3A
- < Voltage rating > 250V

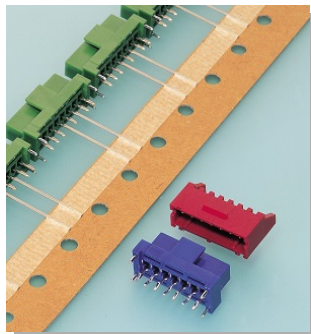


- *Used to interconnect PC boards in parallel, vertically or horizontally.
- *Folded beam construction
- *Molded-in header

JL connector

2.5mm pitch

- < Type >
- Shrouded header type, With locking device, PC board perpendicular mounting type
- < Current rating > 3A
- < Voltage rating > 250V

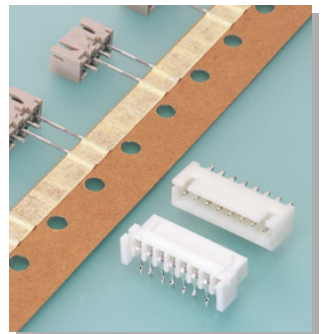


The JL series is a 2.5 mm pitch board-to-board connector designed for perpendicular connections with improved mounting strength. It is robust and offers excellent resistance against shock and vibration.

JQ connector

2.5mm pitch

- < Type >
- Shrouded header type, PC board horizontal, parallel or perpendicular mounting type
- < Current rating > 3A
- < Voltage rating > 250V

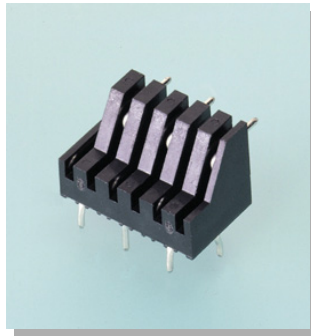


- *High contact pressure
- *Fully shrouded header
- *The header is interchangeable with those of crimp style XH connector and insulation displacement NR/NRD connectors.

MBS header

2.5mm pitch

- < Type >
- PC board perpendicular mounting type
- < Current rating > 1.0A
- < Voltage rating > 250V

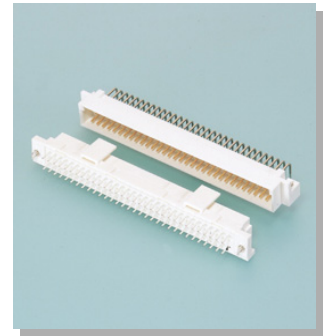


Headers for board-to-board connection
 *Staggered pins
 *The MBS header has a locking boss that allows it to be temporarily mounted on the PC board.

DIN connector

2.54mm pitch

- < Type >
- Conformed to DIN standard
- < Current rating > 1.0A
- < Voltage rating > 50V



Conforms to DIN standards.
 *The receptacle housing has a locking device to securely hold the plug housing.
 *Hook pins to assure connection of the boards.

JDV connector

3mm pitch

- < Type >
- With locking device, PC board perpendicular mounting type, With staggered solder tails
- < Current rating > 1.0A
- < Voltage rating > 50V

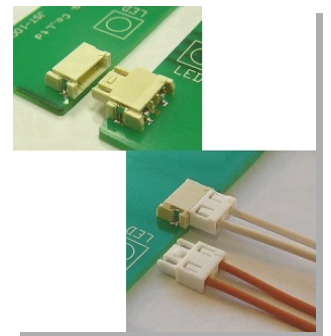


The JDV connector is designed for board-to-board connections with a secure locking device that provides stability and excellent performance against shock and vibration.

LEB connector

4mm pitch

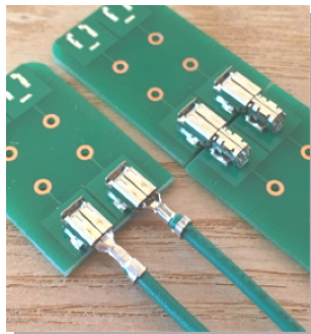
- < Type >
- Absorbing PC board misalignment type, PC board horizontal mounting type
- Crimp style, Disconnectable type
- < Current rating > 3A
- < Voltage rating > 300V



Considering about luminescence property of LED device, this LEB connector is designed as low profile type connector (height: 2.7mm) for LED lighting, and achieves the space saving. The horizontal connection between PCBs enables and the mechanism of absorbing the PCB misalignment has been installed considering the parallel use for the connector. Fork type contact that has a high contact pressure (receptacle side) and enough mating stroke provide the stable contact performance even if the PCB expands and contracts due to heat.

LEK connector

- < Type >
- Absorbing PC board misalignment type, PC board horizontal mounting type
- Board to Board connector with secure lock device
- < Current rating > 3A



This LEK connector is board-to-board connector that does not use the housing and has a positive lock. This enables to absorb misalignment when mating connector.